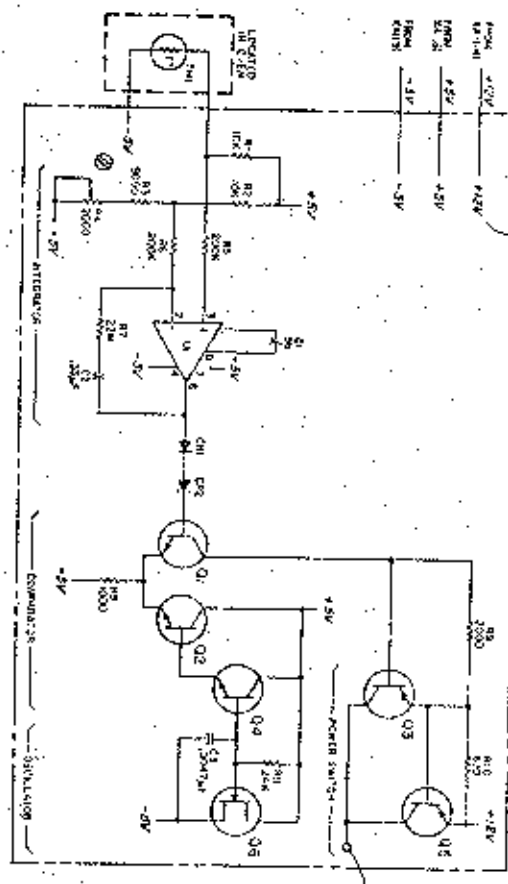
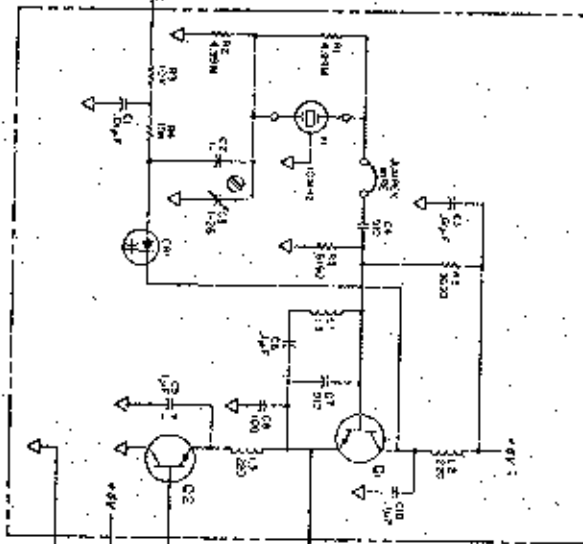


A1 OVER CONTROLLER ASSEMBLY (REF. DOCUMENT I)

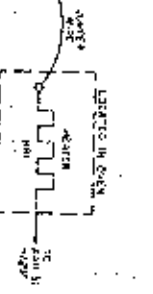
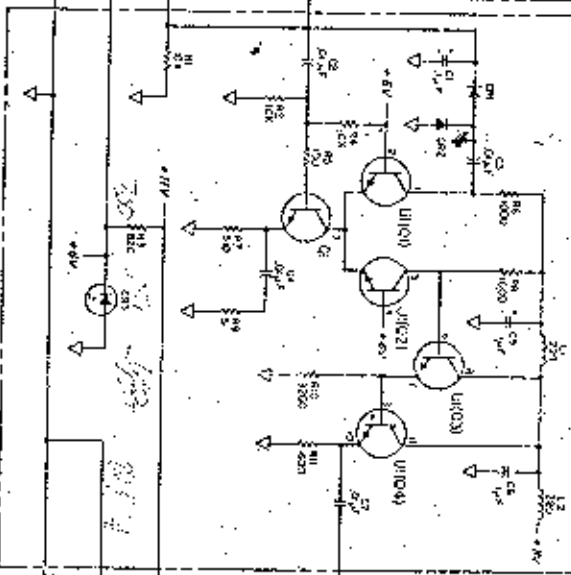


ITEM	QTY	DESCRIPTION
1	1	U1 741C
2	1	T1 250:10:250
3	1	T2 150V 20A
4	1	T3 250V 150V
5	1	Z1 4.7V
6	1	C1 0.001F
7	1	C2 0.0025F
8	1	L1
9	1	Q1 2N3055
10	1	Q2 2N3055
11	1	Q3 2N3055
12	1	R1 100K
13	1	R2 10K
14	1	R3 1K
15	1	R4 100K
16	1	R5 10K
17	1	R6 10K
18	1	R7 10K
19	1	R8 10K
20	1	R9 10K
21	1	R10 10K
22	1	R11 10K
23	1	R12 10K
24	1	R13 10K
25	1	R14 10K
26	1	R15 10K
27	1	R16 10K
28	1	R17 10K
29	1	R18 10K
30	1	R19 10K
31	1	R20 10K
32	1	R21 10K
33	1	R22 10K
34	1	R23 10K
35	1	R24 10K
36	1	R25 10K
37	1	R26 10K
38	1	R27 10K
39	1	R28 10K
40	1	R29 10K
41	1	R30 10K

A2 OSCILLATOR ASSEMBLY (REF. DOCUMENT I)



A3 ABC-DUTY AMPLIFIER ASSEMBLY (REF. DOCUMENT I)



FROM SEC
FROM MAINS
FROM MAINS
FROM MAINS
FROM MAINS

POWER GND
TO MAINS

Handwritten notes: 1.78, 1.78, 1.78